

DATA SHARING WITH ERDC & ERDC'S DATA REQUEST PROCESS

PRESENTED BY

DR. TESS GREENE, EDUCATION RESEARCH DATA CENTER

WACTE GENERAL MEETING

OCTOBER 2019

PROJECT GOALS

- EPPs share student level data with ERDC for these purposes:
 - To fulfill EPP reporting requirements of aggregate data to PESB
 - To integrate EPP data with the ERDC P20W data warehouse to facilitate deeper analyses into workforce related questions
 - To make data on teacher preparation process and performance in Washington available to qualified third party researchers

AUTHORIZING LEGISLATION

- SHB 1741 - passed in the 2017 legislative session
- Amended RCW 28B.77.100 to include these points:
 - (3) State-approved educator preparation programs must collect and provide data as required for approval by the professional educator standards board to the education data center.
 - (4) The education data center and the state-approved educator preparation programs as described in RCW 28A.410.210 shall enter data-sharing agreements to facilitate the transfer of data required by the professional educator standards board. The education data center must hold, analyze, and make available for research and monitoring by the professional educator standards board, state approved educator preparation programs, and other researchers with appropriate data-sharing agreements, the data on the preparation of educators.
- Background and documents can be found here:
 - <https://app.leg.wa.gov/billsummary?BillNumber=1741&Year=2017>

DATA GOVERNANCE TASK FORCE

- Originally 12 members
- Membership balanced along these dimensions
 - Geographic
 - Institutional type, governance, and size
 - Program Type
 - Individual's role in relation to program
 - External representative organizations
- Role of the task force is *ADVISORY*

WHAT MAKES IT WORK

Data
Sharing
Agreements

WHY DO WE NEED A DSA?

- Outlines the terms that govern the sharing partnership
 - What data is being shared
 - How it can be used
 - How it will be protected
 - Under what circumstances it will be destroyed
- FERPA exceptions to data sharing without student consent
 - Audit or evaluation of an education program
 - Authorized study
- ERDC as authorized representative

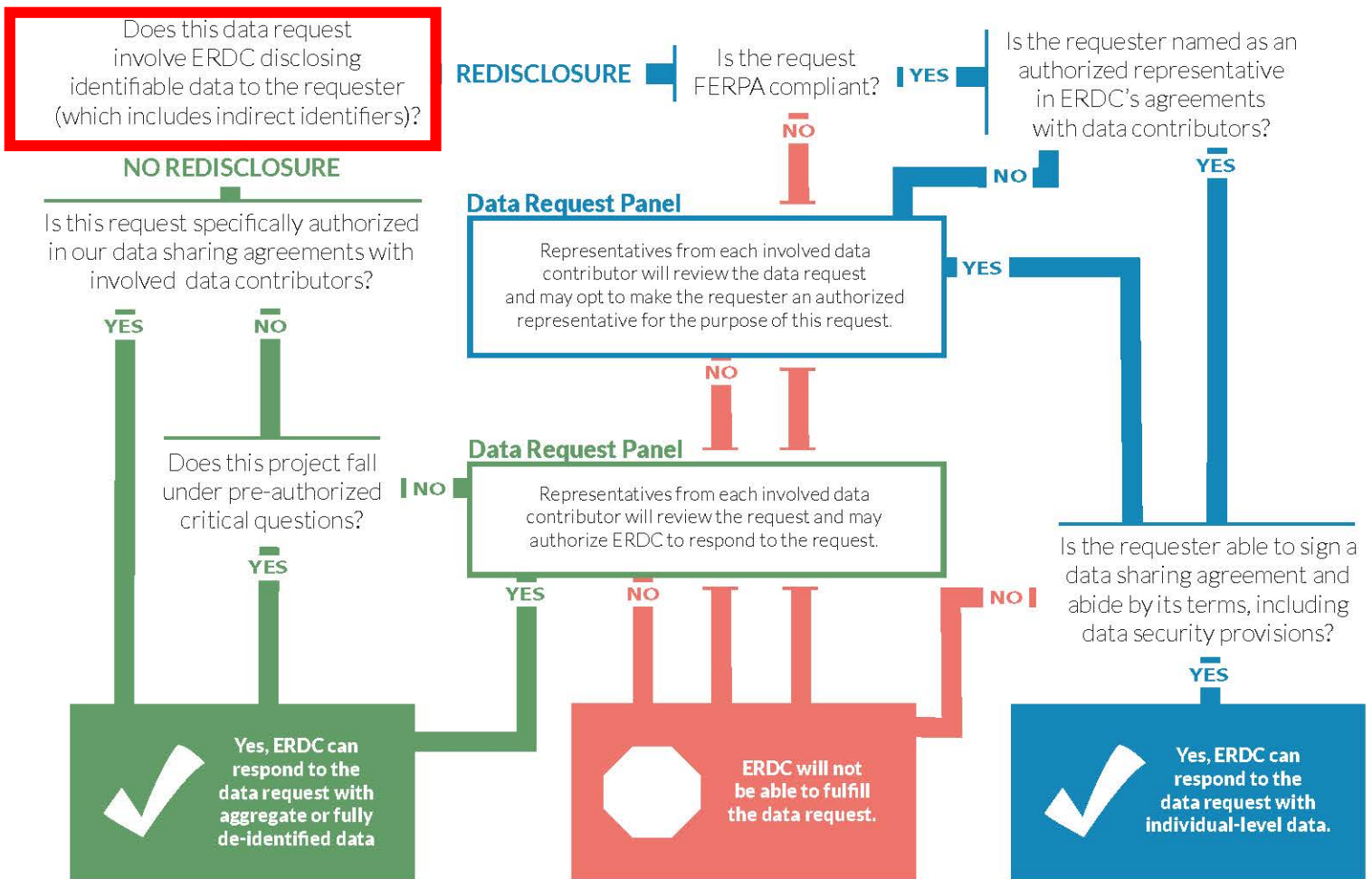
EPP DSAs – ROUND 1 & 2

- Initial DSA to cover 2019 data submission
 - Compliance only
- Next iteration of the DSA for 2020 data submission & beyond
 - Incorporates provisions for third party access
 - Extends for 5 years
 - Amendable / Renewable

ERDC DATA REQUEST POLICY

- <https://erdc.wa.gov/data-resources/data-request-process>
- Multi-step process to ensure FERPA compliance and student privacy
- [Redisclosure vs. Non-redisclosure](#)
- Transparent process – all request documentation available on the ERDC website: <https://erdc.wa.gov/data-resources/data-requests-0>

Will I receive data from ERDC?



Definitions

FERPA compliance. FERPA refers to the Family Educational Rights and Privacy Act, which outlines the conditions under which education data can be shared without individual consent. ERDC receives and shares data under the audit and evaluation exception to consent, which means that ERDC cannot redisclose data for studies that are not an audit or evaluation of a state- or federally-funded education program.

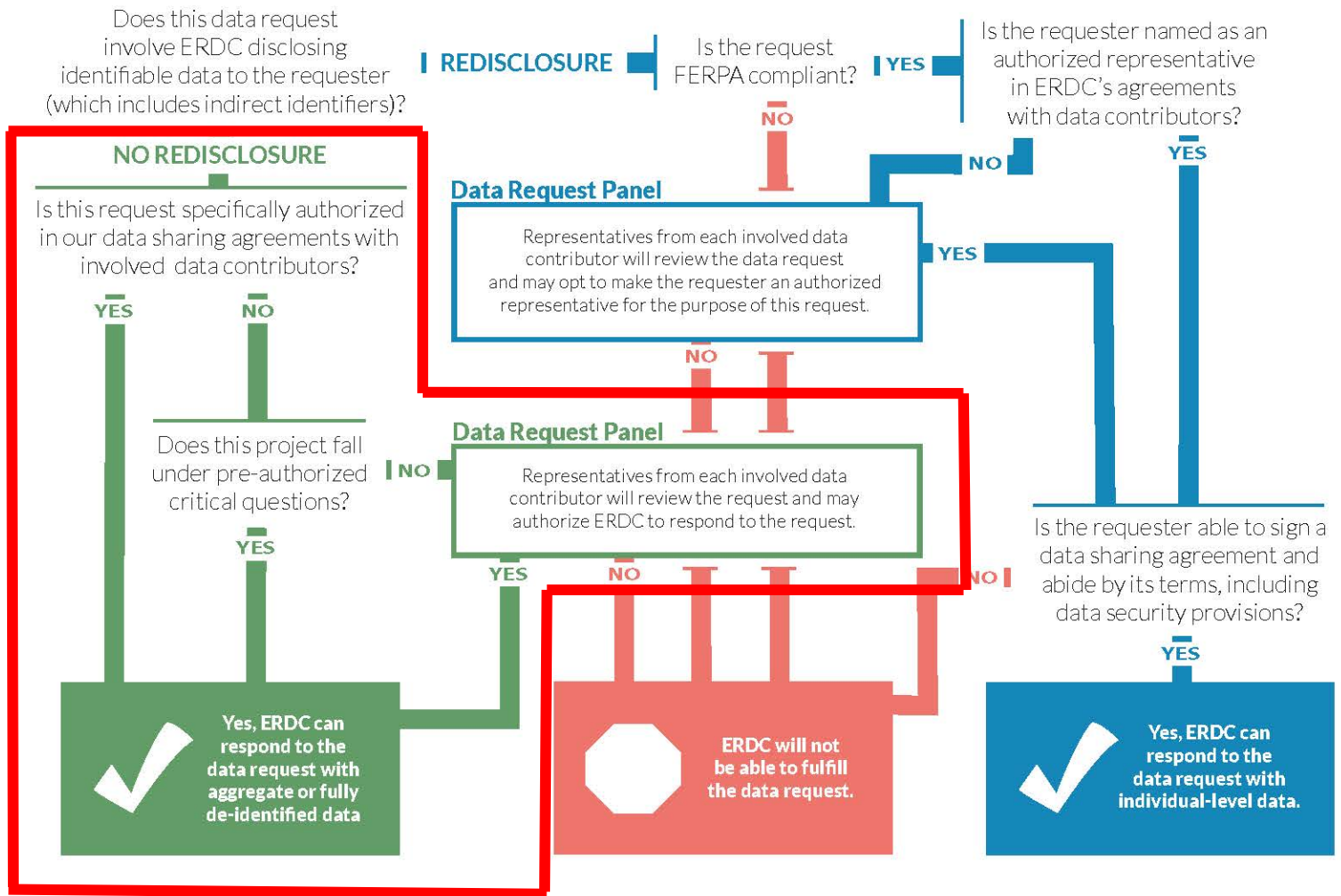
Redisclosure. When ERDC shares identifiable data it has received from contributors to a third party (including data with indirect identifiers or unredacted aggregate data), this constitutes redisclosure. However, even activities that involve no redisclosure typically involve access to identifiable data by ERDC staff, and needs to be authorized by data contributors through data sharing agreements or pre-authorized critical questions.

Identifiable data. ERDC will not share direct identifiers (except in rare circumstances). A record-level dataset with many demographic and outcome variables is not a de-identified data set, even if there are no direct identifiers. Such data is considered identifiable data, and is protected by FERPA and other privacy laws. The same is true of aggregate data with small cell sizes.

Aggregate data. Data that has been aggregated such that no cell or value describes fewer than 10 students, and so that no individual's information can be inferred from the data. When sharing aggregate education data, we follow the redaction rules outlined in SLDS Technical Brief #3.

Fully de-identified data. Record-level data set that includes very few demographic and outcome variables, so that it is not possible to infer the identity of any student therein (even when combined with other available data). To de-identify individual-level education data, ERDC requires that there be at least 10 students for every combination of student characteristics.

Will I receive data from ERDC?



Definitions

FERPA compliance. FERPA refers to the Family Educational Rights and Privacy Act, which outlines the conditions under which education data can be shared without individual consent. ERDC receives and shares data under the audit and evaluation exception to consent, which means that ERDC cannot redisclose data for studies that are not an audit or evaluation of a state- or federally-funded education program.

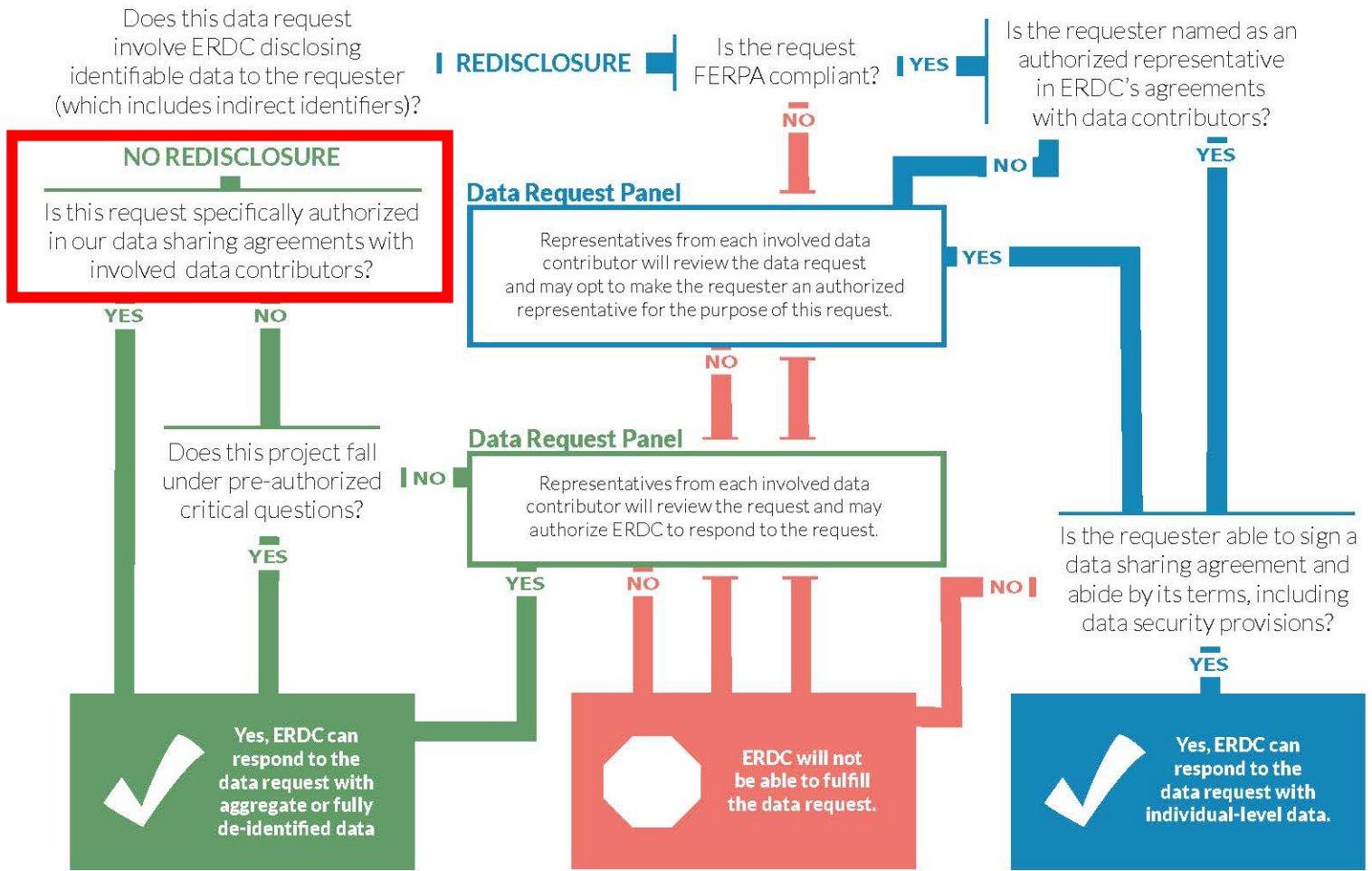
Redisclosure. When ERDC shares identifiable data it has received from contributors to a third party (including data with indirect identifiers or unredacted aggregate data), this constitutes redisclosure. However, even activities that involve no redisclosure typically involve access to identifiable data by ERDC staff, and needs to be authorized by data contributors through data sharing agreements or pre-authorized critical questions.

Identifiable data. ERDC will not share direct identifiers (except in rare circumstances). A record-level dataset with many demographic and outcome variables is not a de-identified data set, even if there are no direct identifiers. Such data is considered identifiable data, and is protected by FERPA and other privacy laws. The same is true of aggregate data with small cell sizes.

Aggregate data. Data that has been aggregated such that no cell or value describes fewer than 10 students, and so that no individual's information can be inferred from the data. When sharing aggregate education data, we follow the redaction rules outlined in SLDS Technical Brief #3.

Fully de-identified data. Record-level data set that includes very few demographic and outcome variables, so that it is not possible to infer the identity of any student therein (even when combined with other available data). To de-identify individual-level education data, ERDC requires that there be at least 10 students for every combination of student characteristics.

Will I receive data from ERDC?



Definitions

FERPA compliance. FERPA refers to the Family Educational Rights and Privacy Act, which outlines the conditions under which education data can be shared without individual consent. ERDC receives and shares data under the audit and evaluation exception to consent, which means that ERDC cannot redisclose data for studies that are not an audit or evaluation of a state- or federally-funded education program.

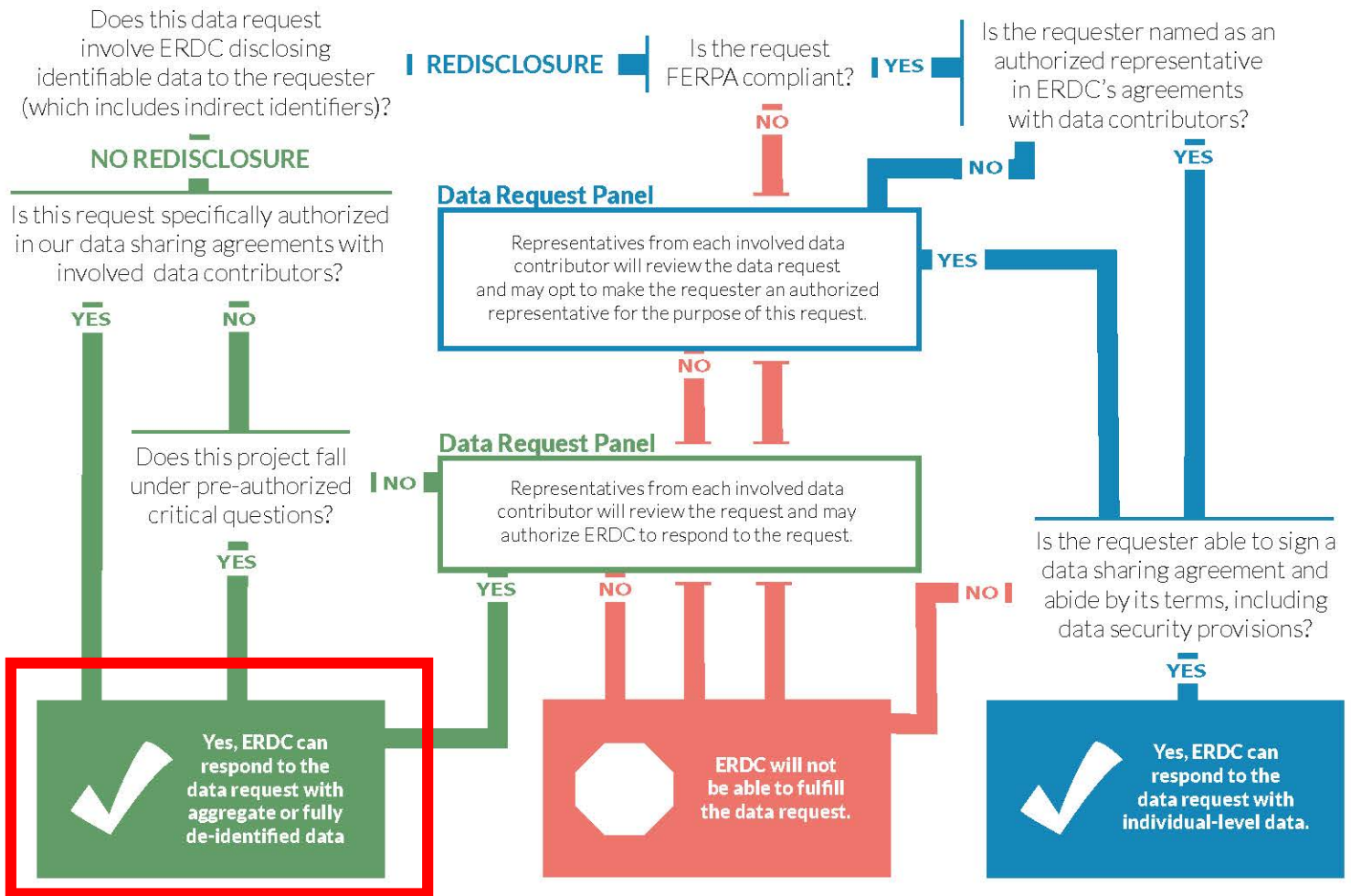
Redisclosure. When ERDC shares identifiable data it has received from contributors to a third party (including data with indirect identifiers or unredacted aggregate data), this constitutes redisclosure. However, even activities that involve no redisclosure typically involve access to identifiable data by ERDC staff, and needs to be authorized by data contributors through data sharing agreements or pre-authorized critical questions.

Identifiable data. ERDC will not share direct identifiers (except in rare circumstances). A record-level dataset with many demographic and outcome variables is not a de-identified data set, even if there are no direct identifiers. Such data is considered identifiable data, and is protected by FERPA and other privacy laws. The same is true of aggregate data with small cell sizes.

Aggregate data. Data that has been aggregated such that no cell or value describes fewer than 10 students, and so that no individual's information can be inferred from the data. When sharing aggregate education data, we follow the redaction rules outlined in SLDS Technical Brief #3.

Fully de-identified data. Record-level data set that includes very few demographic and outcome variables, so that it is not possible to infer the identity of any student therein (even when combined with other available data). To de-identify individual-level education data, ERDC requires that there be at least 10 students for every combination of student characteristics.

Will I receive data from ERDC?



Definitions

FERPA compliance. FERPA refers to the Family Educational Rights and Privacy Act, which outlines the conditions under which education data can be shared without individual consent. ERDC receives and shares data under the audit and evaluation exception to consent, which means that ERDC cannot redisclose data for studies that are not an audit or evaluation of a state- or federally-funded education program.

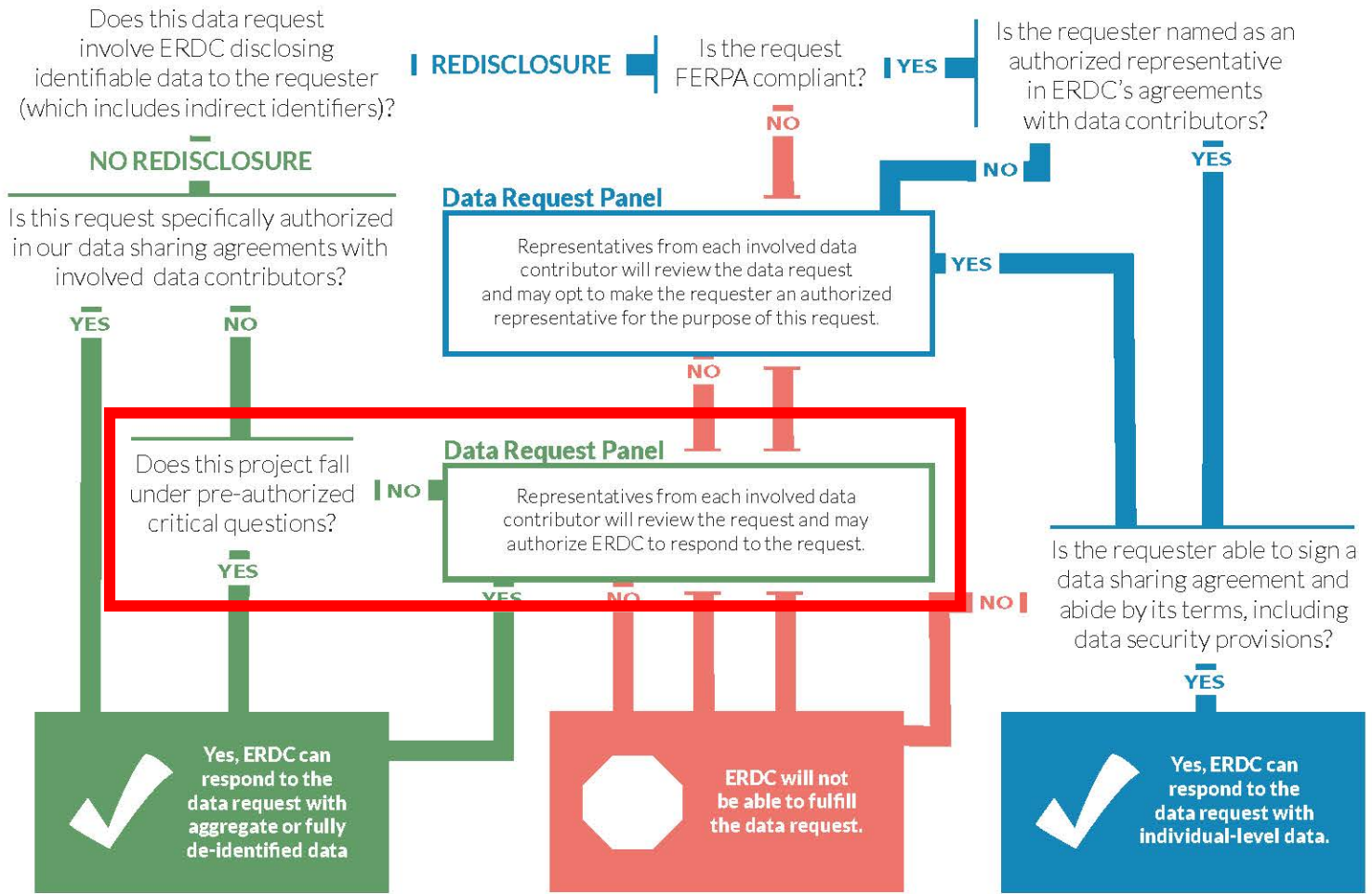
Redisclosure. When ERDC shares identifiable data it has received from contributors to a third party (including data with indirect identifiers or unredacted aggregate data), this constitutes redisclosure. However, even activities that involve no redisclosure typically involve access to identifiable data by ERDC staff, and needs to be authorized by data contributors through data sharing agreements or pre-authorized critical questions.

Identifiable data. ERDC will not share direct identifiers (except in rare circumstances). A record-level dataset with many demographic and outcome variables is not a de-identified data set, even if there are no direct identifiers. Such data is considered identifiable data, and is protected by FERPA and other privacy laws. The same is true of aggregate data with small cell sizes.

Aggregate data. Data that has been aggregated such that no cell or value describes fewer than 10 students, and so that no individual's information can be inferred from the data. When sharing aggregate education data, we follow the redaction rules outlined in SLDS Technical Brief #3.

Fully de-identified data. Record-level data set that includes very few demographic and outcome variables, so that it is not possible to infer the identity of any student therein (even when combined with other available data). To de-identify individual-level education data, ERDC requires that there be at least 10 students for every combination of student characteristics.

Will I receive data from ERDC?



Definitions

FERPA compliance. FERPA refers to the Family Educational Rights and Privacy Act, which outlines the conditions under which education data can be shared without individual consent. ERDC receives and shares data under the audit and evaluation exception to consent, which means that ERDC cannot redisclose data for studies that are not an audit or evaluation of a state- or federally-funded education program.

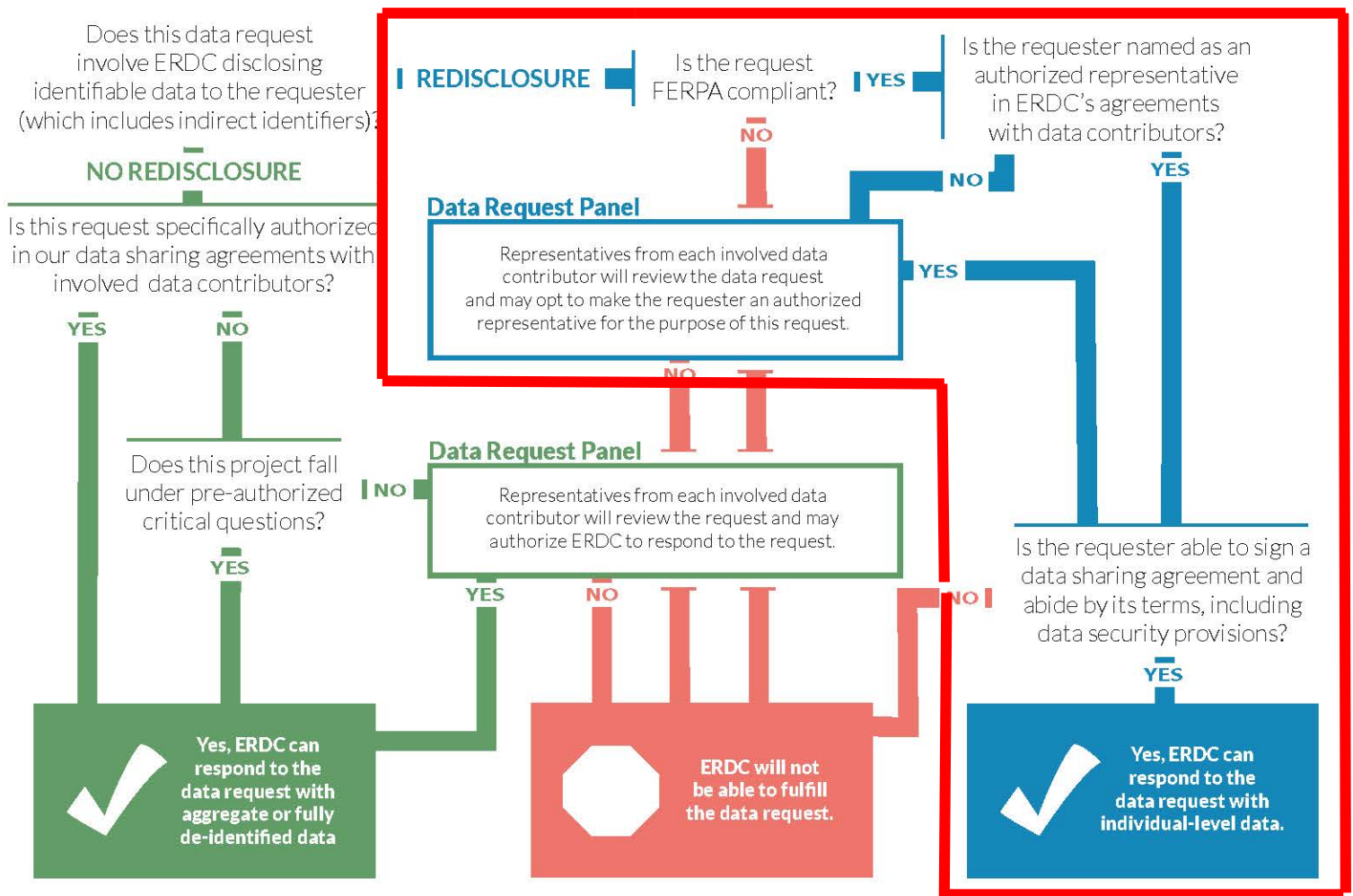
Redisclosure. When ERDC shares identifiable data it has received from contributors to a third party (including data with indirect identifiers or unredacted aggregate data), this constitutes redisclosure. However, even activities that involve no redisclosure typically involve access to identifiable data by ERDC staff, and needs to be authorized by data contributors through data sharing agreements or pre-authorized critical questions.

Identifiable data. ERDC will not share direct identifiers (except in rare circumstances). A record-level dataset with many demographic and outcome variables is not a de-identified data set, even if there are no direct identifiers. Such data is considered identifiable data, and is protected by FERPA and other privacy laws. The same is true of aggregate data with small cell sizes.

Aggregate data. Data that has been aggregated such that no cell or value describes fewer than 10 students, and so that no individual's information can be inferred from the data. When sharing aggregate education data, we follow the redaction rules outlined in SLDS Technical Brief #3.

Fully de-identified data. Record-level data set that includes very few demographic and outcome variables, so that it is not possible to infer the identity of any student therein (even when combined with other available data). To de-identify individual-level education data, ERDC requires that there be at least 10 students for every combination of student characteristics.

Will I receive data from ERDC?



Definitions

FERPA compliance. FERPA refers to the Family Educational Rights and Privacy Act, which outlines the conditions under which education data can be shared without individual consent. ERDC receives and shares data under the audit and evaluation exception to consent, which means that ERDC cannot redisclose data for studies that are not an audit or evaluation of a state- or federally-funded education program.

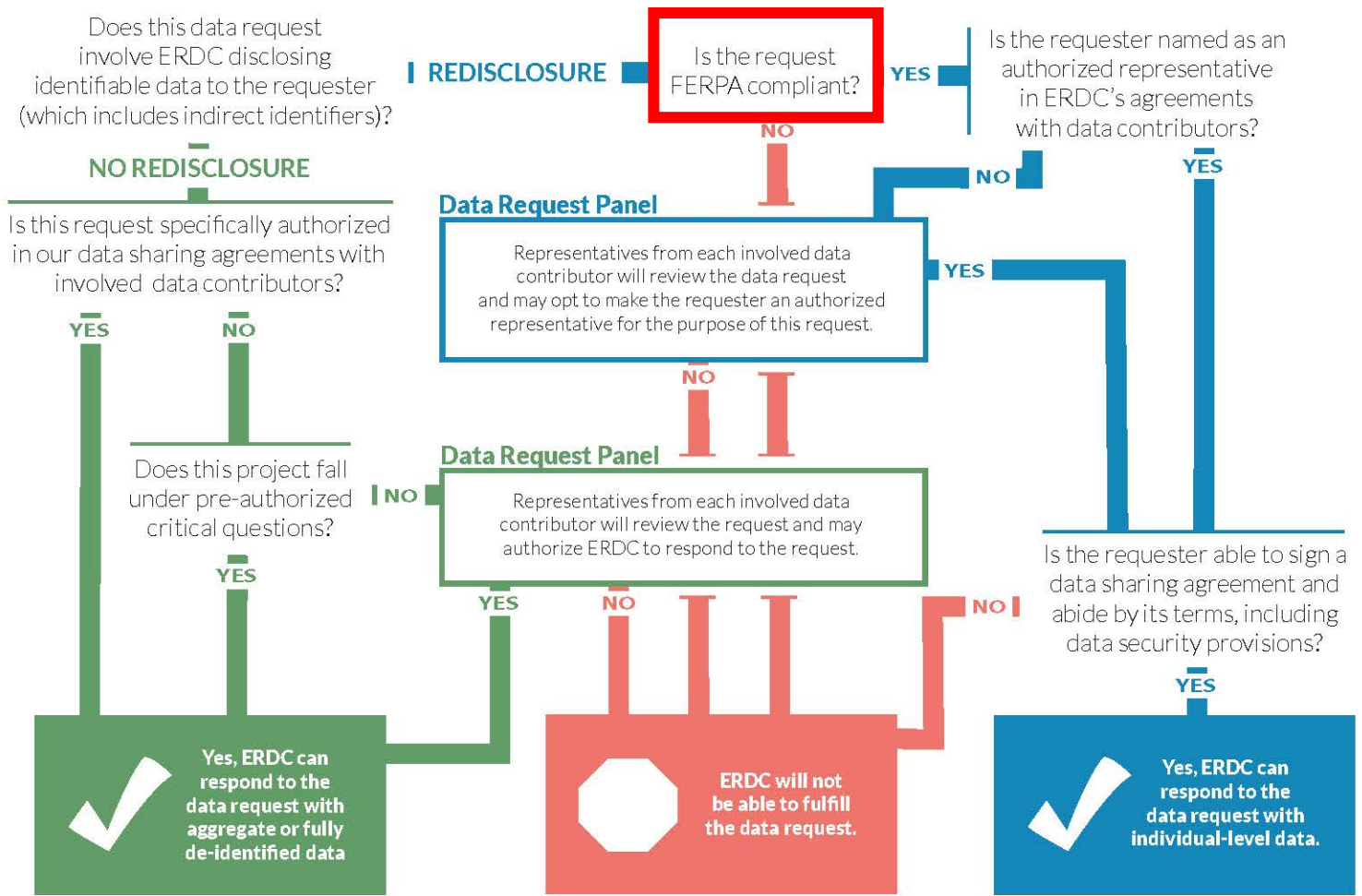
Redisclosure. When ERDC shares identifiable data it has received from contributors to a third party (including data with indirect identifiers or unredacted aggregate data), this constitutes redisclosure. However, even activities that involve no redisclosure typically involve access to identifiable data by ERDC staff, and needs to be authorized by data contributors through data sharing agreements or pre-authorized critical questions.

Identifiable data. ERDC will not share direct identifiers (except in rare circumstances). A record-level dataset with many demographic and outcome variables is not a de-identified data set, even if there are no direct identifiers. Such data is considered identifiable data, and is protected by FERPA and other privacy laws. The same is true of aggregate data with small cell sizes.

Aggregate data. Data that has been aggregated such that no cell or value describes fewer than 10 students, and so that no individual's information can be inferred from the data. When sharing aggregate education data, we follow the redaction rules outlined in SLDS Technical Brief #3.

Fully de-identified data. Record-level data set that includes very few demographic and outcome variables, so that it is not possible to infer the identity of any student therein (even when combined with other available data). To de-identify individual-level education data, ERDC requires that there be at least 10 students for every combination of student characteristics.

Will I receive data from ERDC?



Definitions

FERPA compliance. FERPA refers to the Family Educational Rights and Privacy Act, which outlines the conditions under which education data can be shared without individual consent. ERDC receives and shares data under the audit and evaluation exception to consent, which means that ERDC cannot redisclose data for studies that are not an audit or evaluation of a state- or federally-funded education program.

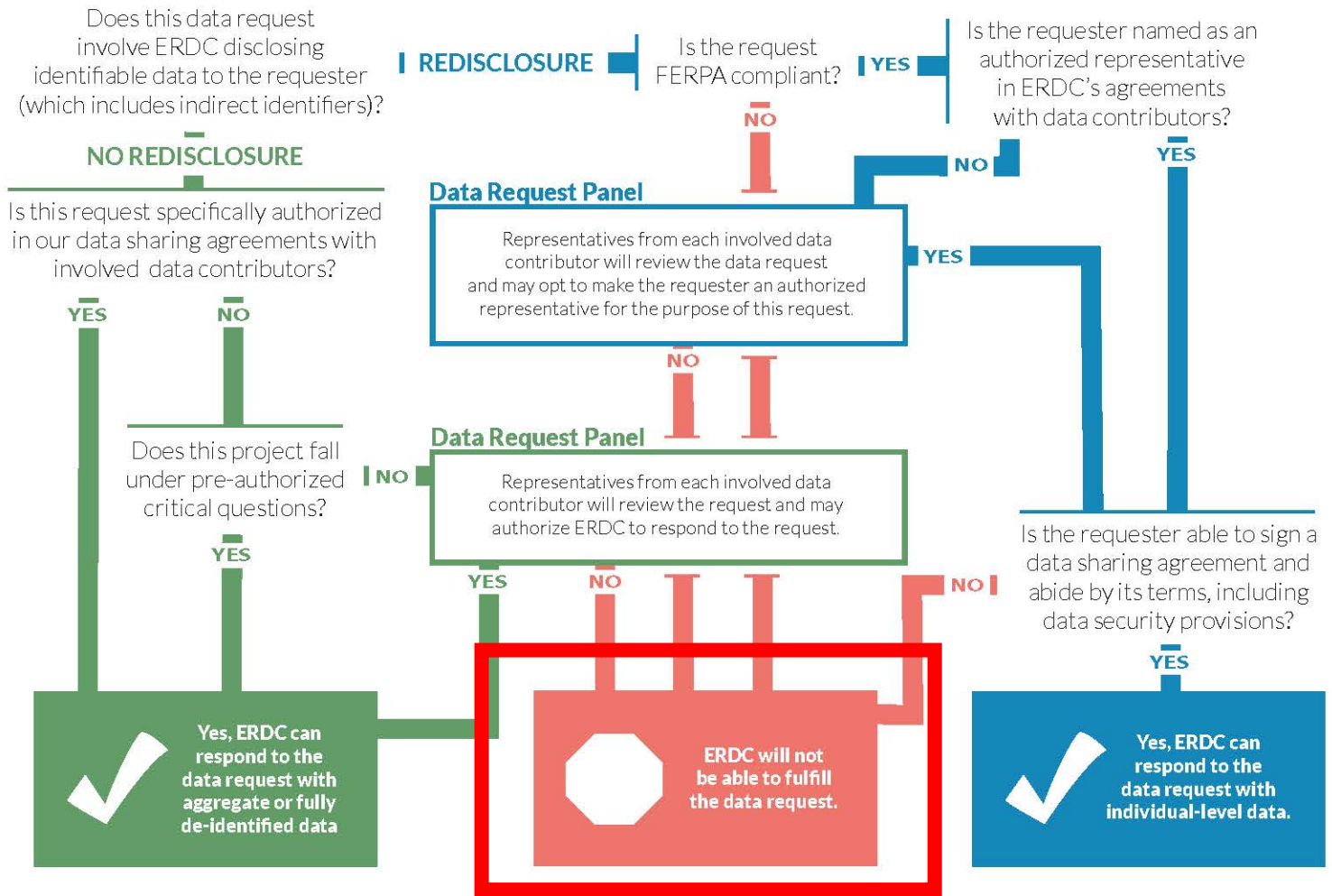
Redisclosure. When ERDC shares identifiable data it has received from contributors to a third party (including data with indirect identifiers or unredacted aggregate data), this constitutes redisclosure. However, even activities that involve no redisclosure typically involve access to identifiable data by ERDC staff, and needs to be authorized by data contributors through data sharing agreements or pre-authorized critical questions.

Identifiable data. ERDC will not share direct identifiers (except in rare circumstances). A record-level dataset with many demographic and outcome variables is not a de-identified data set, even if there are no direct identifiers. Such data is considered identifiable data, and is protected by FERPA and other privacy laws. The same is true of aggregate data with small cell sizes.

Aggregate data. Data that has been aggregated such that no cell or value describes fewer than 10 students, and so that no individual's information can be inferred from the data. When sharing aggregate education data, we follow the redaction rules outlined in SLDS Technical Brief #3.

Fully de-identified data. Record-level data set that includes very few demographic and outcome variables, so that it is not possible to infer the identity of any student therein (even when combined with other available data). To de-identify individual-level education data, ERDC requires that there be at least 10 students for every combination of student characteristics.

Will I receive data from ERDC?



Definitions

FERPA compliance. FERPA refers to the Family Educational Rights and Privacy Act, which outlines the conditions under which education data can be shared without individual consent. ERDC receives and shares data under the audit and evaluation exception to consent, which means that ERDC cannot redisclose data for studies that are not an audit or evaluation of a state- or federally-funded education program.

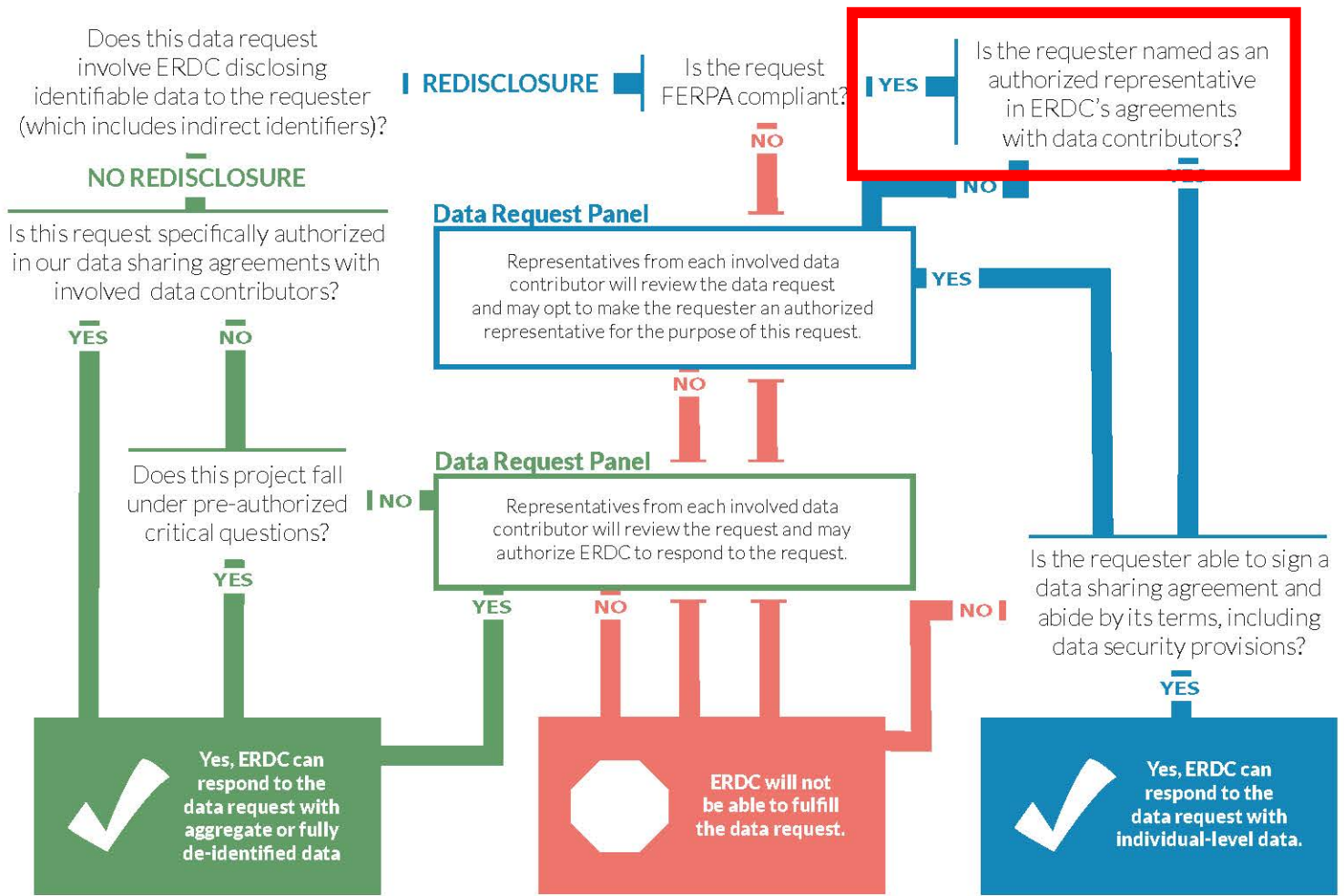
Redisclosure. When ERDC shares identifiable data it has received from contributors to a third party (including data with indirect identifiers or unredacted aggregate data), this constitutes redisclosure. However, even activities that involve no redisclosure typically involve access to identifiable data by ERDC staff, and needs to be authorized by data contributors through data sharing agreements or pre-authorized critical questions.

Identifiable data. ERDC will not share direct identifiers (except in rare circumstances). A record-level dataset with many demographic and outcome variables is not a de-identified data set, even if there are no direct identifiers. Such data is considered identifiable data, and is protected by FERPA and other privacy laws. The same is true of aggregate data with small cell sizes.

Aggregate data. Data that has been aggregated such that no cell or value describes fewer than 10 students, and so that no individual's information can be inferred from the data. When sharing aggregate education data, we follow the redaction rules outlined in SLDS Technical Brief #3.

Fully de-identified data. Record-level data set that includes very few demographic and outcome variables, so that it is not possible to infer the identity of any student therein (even when combined with other available data). To de-identify individual-level education data, ERDC requires that there be at least 10 students for every combination of student characteristics.

Will I receive data from ERDC?



Definitions

FERPA compliance. FERPA refers to the Family Educational Rights and Privacy Act, which outlines the conditions under which education data can be shared without individual consent. ERDC receives and shares data under the audit and evaluation exception to consent, which means that ERDC cannot redisclose data for studies that are not an audit or evaluation of a state- or federally-funded education program.

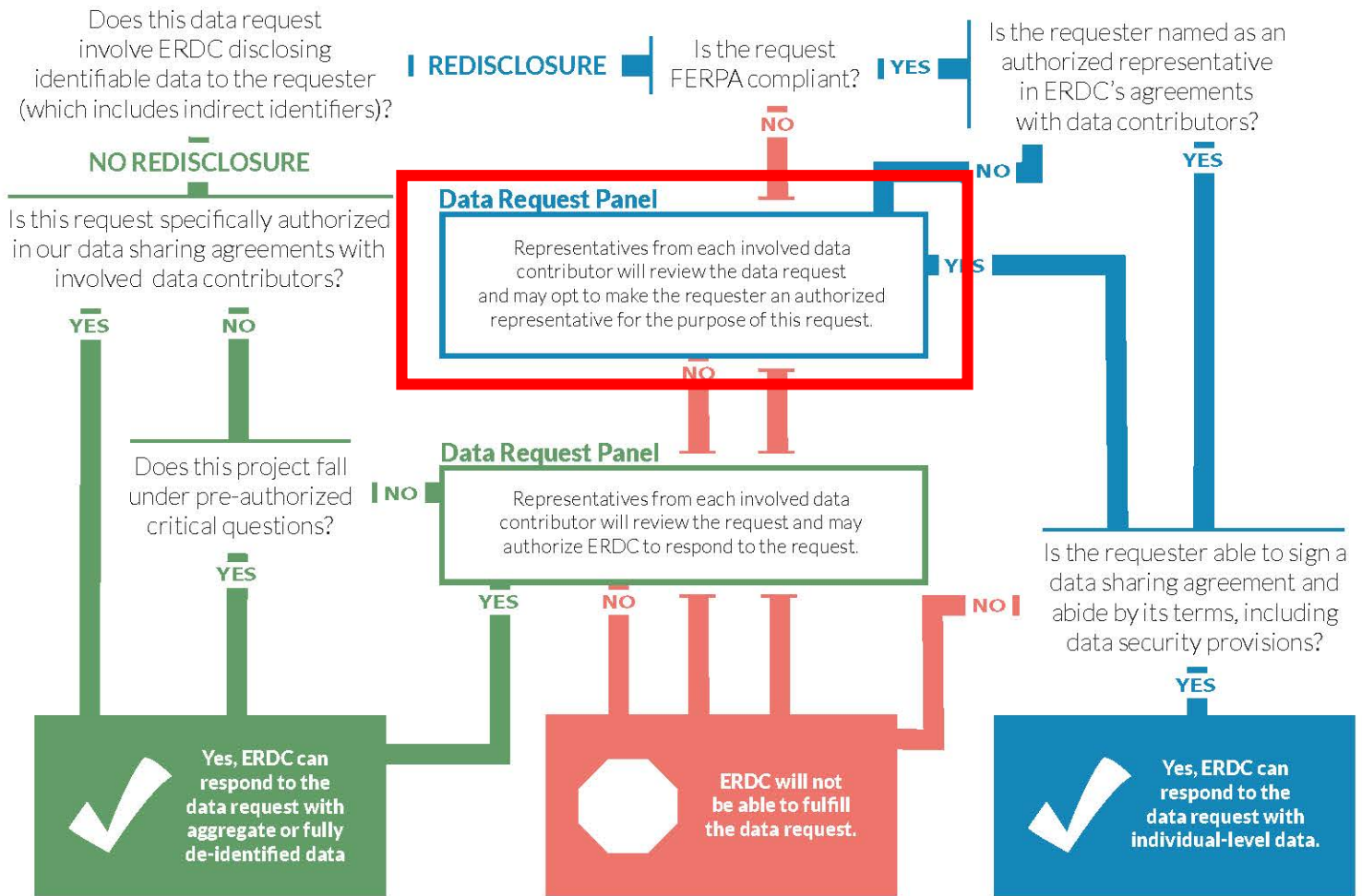
Redisclosure. When ERDC shares identifiable data it has received from contributors to a third party (including data with indirect identifiers or unredacted aggregate data), this constitutes redisclosure. However, even activities that involve no redisclosure typically involve access to identifiable data by ERDC staff, and needs to be authorized by data contributors through data sharing agreements or pre-authorized critical questions.

Identifiable data. ERDC will not share direct identifiers (except in rare circumstances). A record-level dataset with many demographic and outcome variables is not a de-identified data set, even if there are no direct identifiers. Such data is considered identifiable data, and is protected by FERPA and other privacy laws. The same is true of aggregate data with small cell sizes.

Aggregate data. Data that has been aggregated such that no cell or value describes fewer than 10 students, and so that no individual's information can be inferred from the data. When sharing aggregate education data, we follow the redaction rules outlined in SLDS Technical Brief #3.

Fully de-identified data. Record-level data set that includes very few demographic and outcome variables, so that it is not possible to infer the identity of any student therein (even when combined with other available data). To de-identify individual-level education data, ERDC requires that there be at least 10 students for every combination of student characteristics.

Will I receive data from ERDC?



Definitions

FERPA compliance. FERPA refers to the Family Educational Rights and Privacy Act, which outlines the conditions under which education data can be shared without individual consent. ERDC receives and shares data under the audit and evaluation exception to consent, which means that ERDC cannot redisclose data for studies that are not an audit or evaluation of a state- or federally-funded education program.

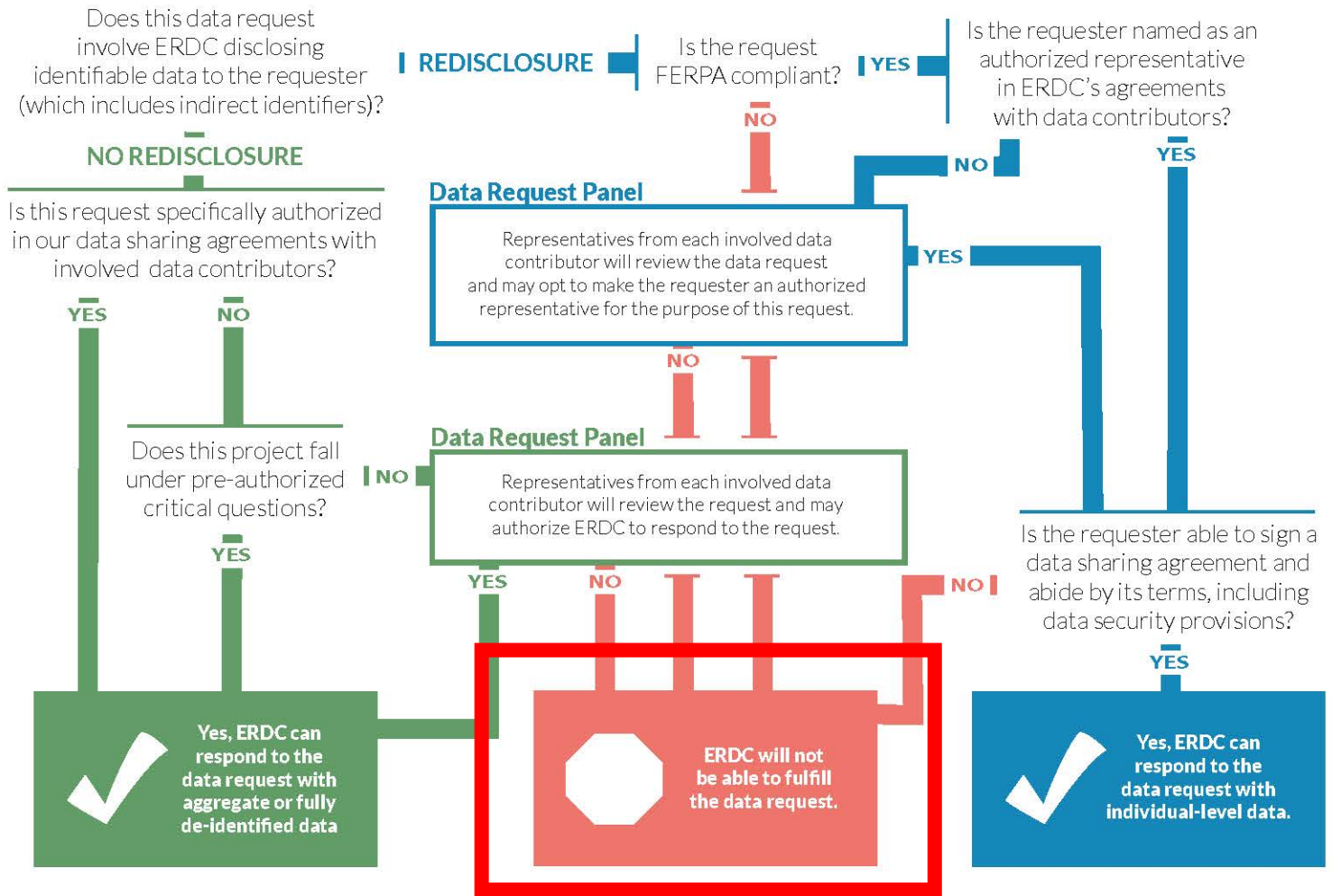
Redisclosure. When ERDC shares identifiable data it has received from contributors to a third party (including data with indirect identifiers or unredacted aggregate data), this constitutes redisclosure. However, even activities that involve no redisclosure typically involve access to identifiable data by ERDC staff, and needs to be authorized by data contributors through data sharing agreements or pre-authorized critical questions.

Identifiable data. ERDC will not share direct identifiers (except in rare circumstances). A record-level dataset with many demographic and outcome variables is not a de-identified data set, even if there are no direct identifiers. Such data is considered identifiable data, and is protected by FERPA and other privacy laws. The same is true of aggregate data with small cell sizes.

Aggregate data. Data that has been aggregated such that no cell or value describes fewer than 10 students, and so that no individual's information can be inferred from the data. When sharing aggregate education data, we follow the redaction rules outlined in SLDS Technical Brief #3.

Fully de-identified data. Record-level data set that includes very few demographic and outcome variables, so that it is not possible to infer the identity of any student therein (even when combined with other available data). To de-identify individual-level education data, ERDC requires that there be at least 10 students for every combination of student characteristics.

Will I receive data from ERDC?



Definitions

FERPA compliance. FERPA refers to the Family Educational Rights and Privacy Act, which outlines the conditions under which education data can be shared without individual consent. ERDC receives and shares data under the audit and evaluation exception to consent, which means that ERDC cannot redisclose data for studies that are not an audit or evaluation of a state- or federally-funded education program.

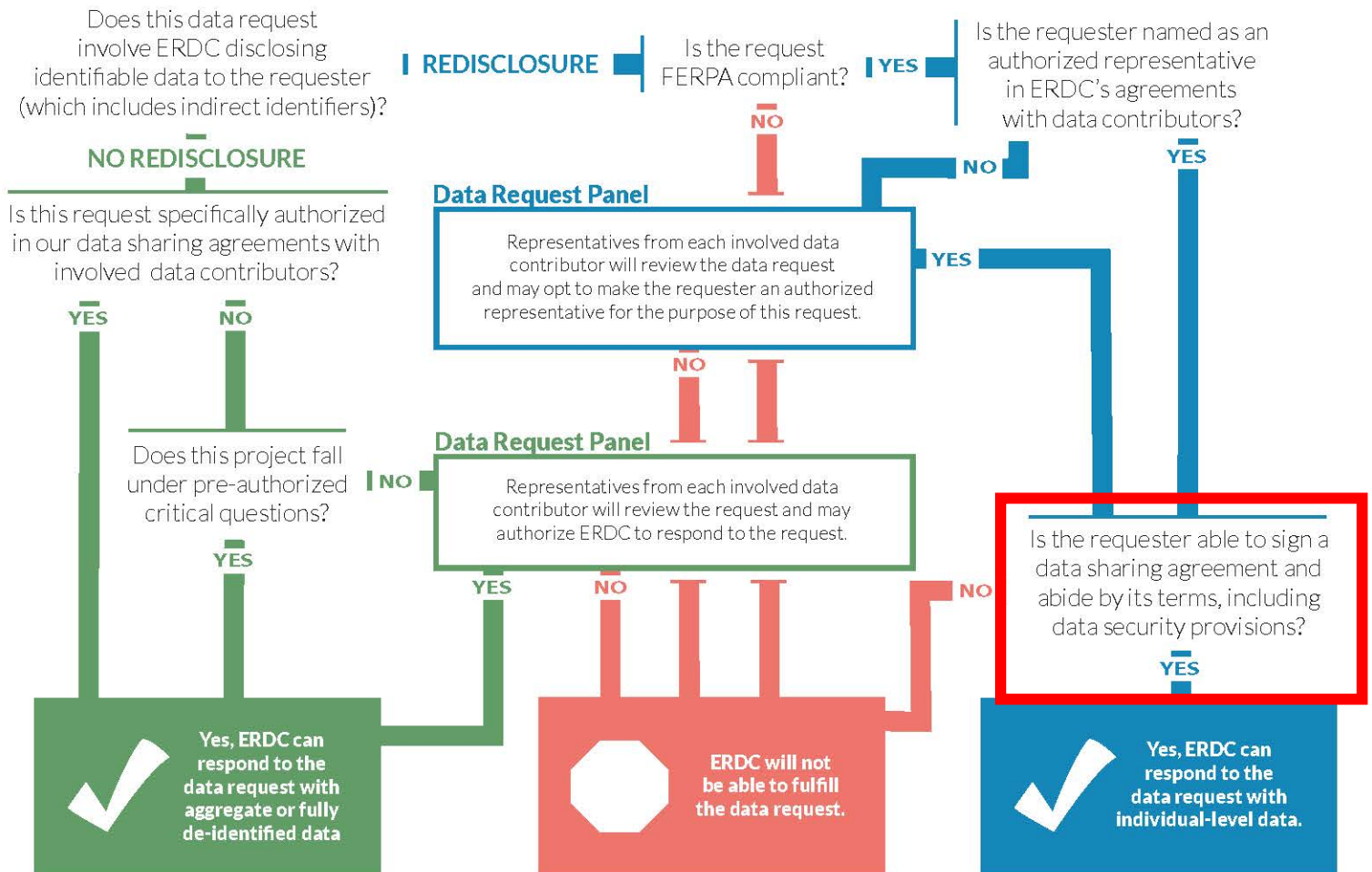
Redisclosure. When ERDC shares identifiable data it has received from contributors to a third party (including data with indirect identifiers or unredacted aggregate data), this constitutes redisclosure. However, even activities that involve no redisclosure typically involve access to identifiable data by ERDC staff, and needs to be authorized by data contributors through data sharing agreements or pre-authorized critical questions.

Identifiable data. ERDC will not share direct identifiers (except in rare circumstances). A record-level dataset with many demographic and outcome variables is not a de-identified data set, even if there are no direct identifiers. Such data is considered identifiable data, and is protected by FERPA and other privacy laws. The same is true of aggregate data with small cell sizes.

Aggregate data. Data that has been aggregated such that no cell or value describes fewer than 10 students, and so that no individual's information can be inferred from the data. When sharing aggregate education data, we follow the redaction rules outlined in SLDS Technical Brief #3.

Fully de-identified data. Record-level data set that includes very few demographic and outcome variables, so that it is not possible to infer the identity of any student therein (even when combined with other available data). To de-identify individual-level education data, ERDC requires that there be at least 10 students for every combination of student characteristics.

Will I receive data from ERDC?



Definitions

FERPA compliance. FERPA refers to the Family Educational Rights and Privacy Act, which outlines the conditions under which education data can be shared without individual consent. ERDC receives and shares data under the audit and evaluation exception to consent, which means that ERDC cannot redisclose data for studies that are not an audit or evaluation of a state- or federally-funded education program.

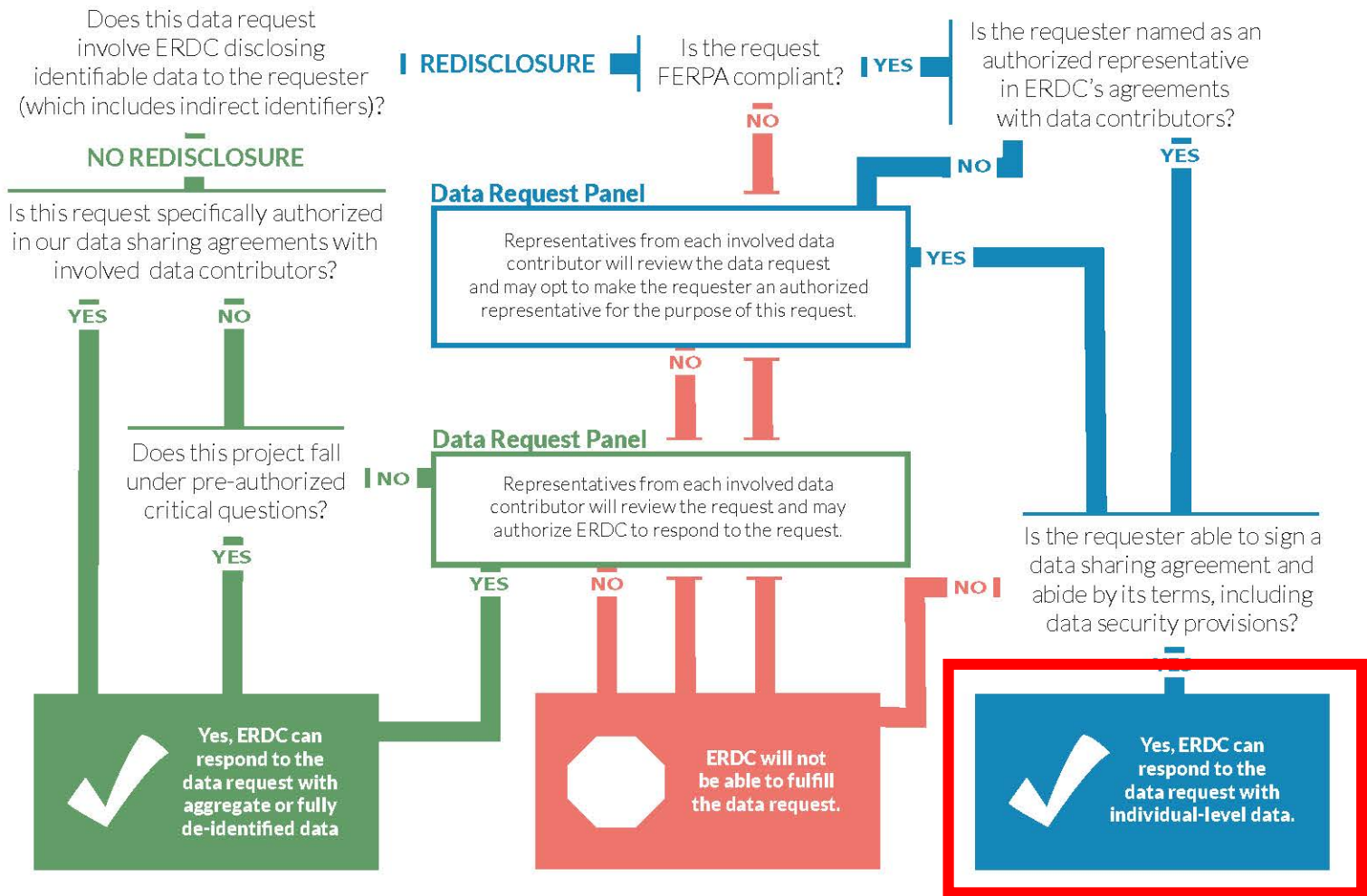
Redisclosure. When ERDC shares identifiable data it has received from contributors to a third party (including data with indirect identifiers or unredacted aggregate data), this constitutes redisclosure. However, even activities that involve no redisclosure typically involve access to identifiable data by ERDC staff, and needs to be authorized by data contributors through data sharing agreements or pre-authorized critical questions.

Identifiable data. ERDC will not share direct identifiers (except in rare circumstances). A record-level dataset with many demographic and outcome variables is not a de-identified data set, even if there are no direct identifiers. Such data is considered identifiable data, and is protected by FERPA and other privacy laws. The same is true of aggregate data with small cell sizes.

Aggregate data. Data that has been aggregated such that no cell or value describes fewer than 10 students, and so that no individual's information can be inferred from the data. When sharing aggregate education data, we follow the redaction rules outlined in SLDS Technical Brief #3.

Fully de-identified data. Record-level data set that includes very few demographic and outcome variables, so that it is not possible to infer the identity of any student therein (even when combined with other available data). To de-identify individual-level education data, ERDC requires that there be at least 10 students for every combination of student characteristics.

Will I receive data from ERDC?



Definitions

FERPA compliance. FERPA refers to the Family Educational Rights and Privacy Act, which outlines the conditions under which education data can be shared without individual consent. ERDC receives and shares data under the audit and evaluation exception to consent, which means that ERDC cannot redisclose data for studies that are not an audit or evaluation of a state- or federally-funded education program.

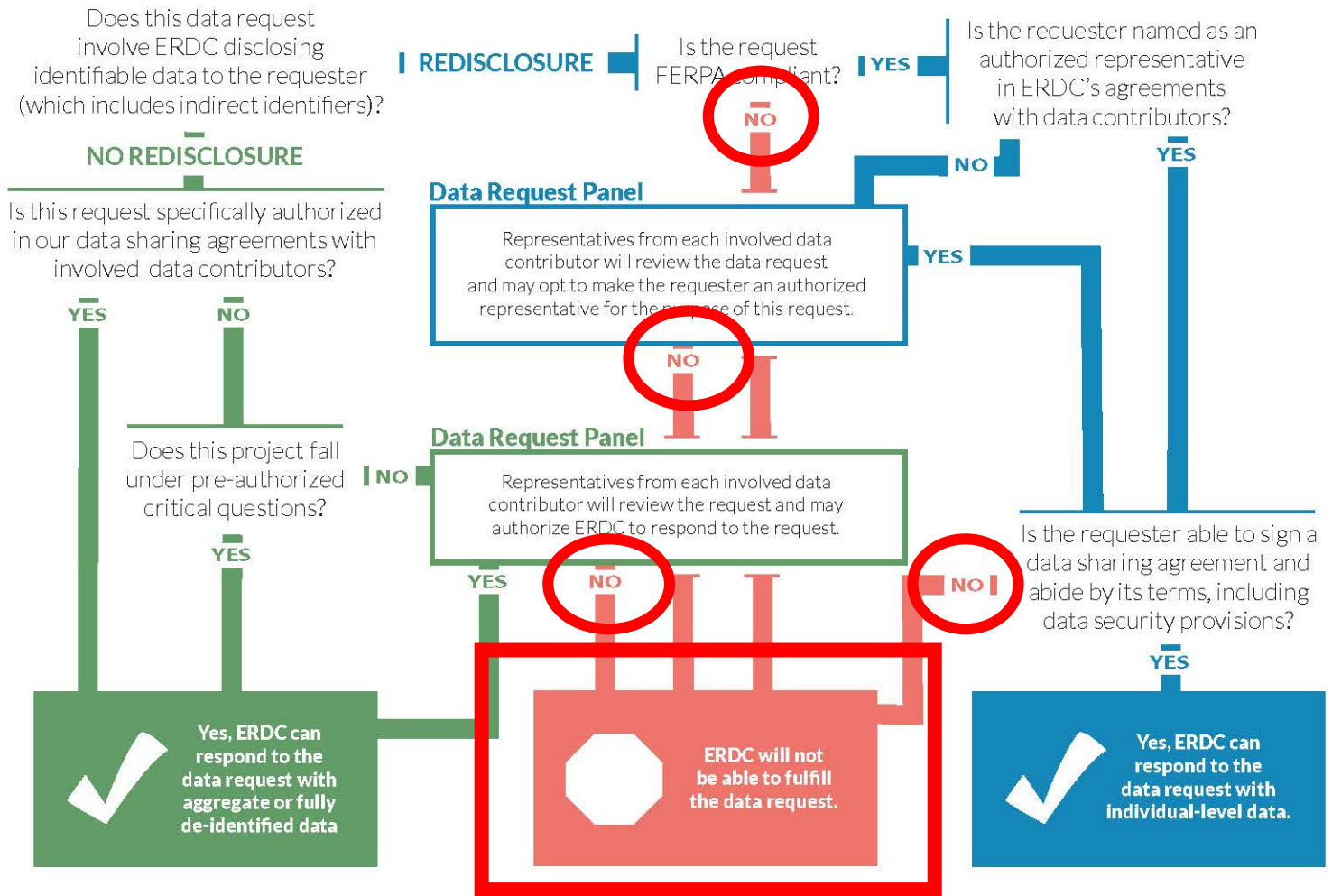
Redisclosure. When ERDC shares identifiable data it has received from contributors to a third party (including data with indirect identifiers or unredacted aggregate data), this constitutes redisclosure. However, even activities that involve no redisclosure typically involve access to identifiable data by ERDC staff, and needs to be authorized by data contributors through data sharing agreements or pre-authorized critical questions.

Identifiable data. ERDC will not share direct identifiers (except in rare circumstances). A record-level dataset with many demographic and outcome variables is not a de-identified data set, even if there are no direct identifiers. Such data is considered identifiable data, and is protected by FERPA and other privacy laws. The same is true of aggregate data with small cell sizes.

Aggregate data. Data that has been aggregated such that no cell or value describes fewer than 10 students, and so that no individual's information can be inferred from the data. When sharing aggregate education data, we follow the redaction rules outlined in SLDS Technical Brief #3.

Fully de-identified data. Record-level data set that includes very few demographic and outcome variables, so that it is not possible to infer the identity of any student therein (even when combined with other available data). To de-identify individual-level education data, ERDC requires that there be at least 10 students for every combination of student characteristics.

Will I receive data from ERDC?



Definitions

FERPA compliance. FERPA refers to the Family Educational Rights and Privacy Act, which outlines the conditions under which education data can be shared without individual consent. ERDC receives and shares data under the audit and evaluation exception to consent, which means that ERDC cannot redisclose data for studies that are not an audit or evaluation of a state- or federally-funded education program.

Redisclosure. When ERDC shares identifiable data it has received from contributors to a third party (including data with indirect identifiers or unredacted aggregate data), this constitutes redisclosure. However, even activities that involve no redisclosure typically involve access to identifiable data by ERDC staff, and needs to be authorized by data contributors through data sharing agreements or pre-authorized critical questions.

Identifiable data. ERDC will not share direct identifiers (except in rare circumstances). A record-level dataset with many demographic and outcome variables is not a de-identified data set, even if there are no direct identifiers. Such data is considered identifiable data, and is protected by FERPA and other privacy laws. The same is true of aggregate data with small cell sizes.

Aggregate data. Data that has been aggregated such that no cell or value describes fewer than 10 students, and so that no individual's information can be inferred from the data. When sharing aggregate education data, we follow the redaction rules outlined in SLDS Technical Brief #3.

Fully de-identified data. Record-level data set that includes very few demographic and outcome variables, so that it is not possible to infer the identity of any student therein (even when combined with other available data). To de-identify individual-level education data, ERDC requires that there be at least 10 students for every combination of student characteristics.

You are in
control of
what is being
done with
your data.

CRITICAL QUESTIONS

- Equivalent to “pre-approved” questions
- Streamlines workflows
- Reviewed annually
- All institutions should agree
- NOT REQUIRED

NEXT STEPS

- New DSA for 2020 needs to be in place by September 30, 2020
- New DSA will REPLACE existing DSA
- Section 6 will be coming soon for feedback
- All previous language changes made will be incorporated into the rest of the body of the DSA for review by all institutions

Contact Information

Tess Greene

teresa.greene@ofm.wa.gov

360.725.5151

Jeffrey Thayne

jeffrey.thayne@ofm.wa.gov

360.725.5548